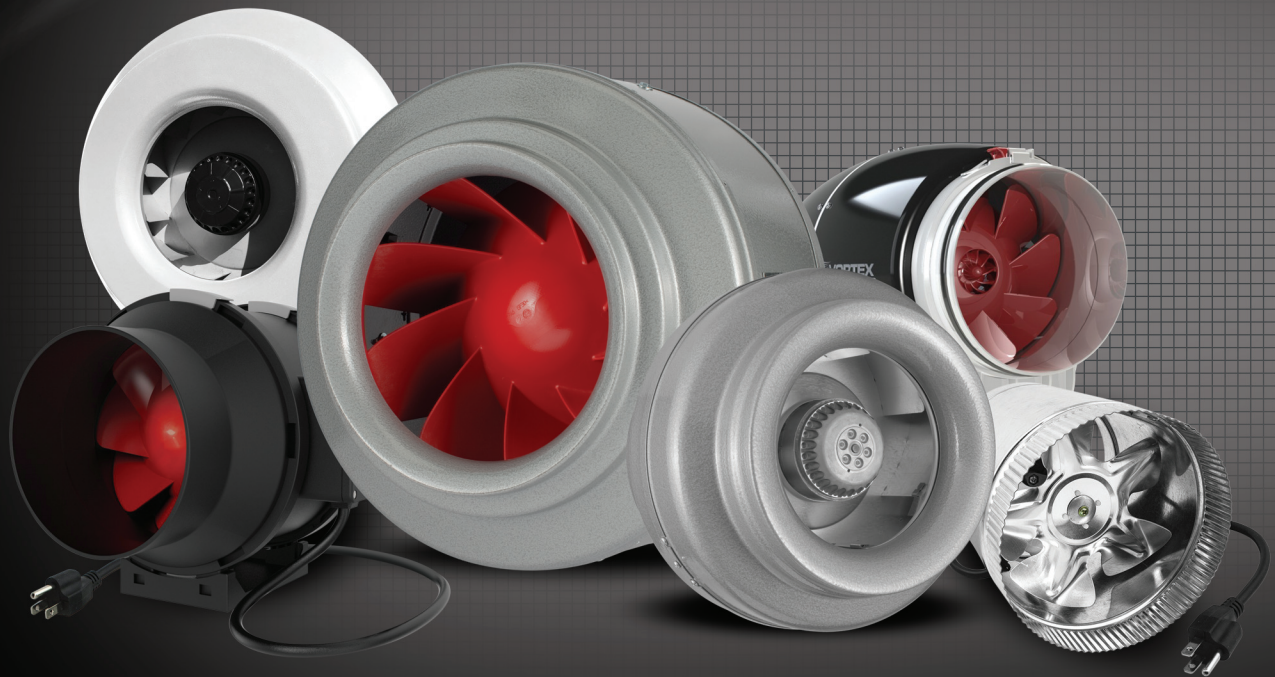


VORTEX[®]
POWERFANS
High Performance Inline Duct Blowers

ATMOSPHERE



/// POWERFULLY ENGINEERED ///

WWW.ATMOSPHERE.COM

BUILT TO LAST

VTX Series (10 year warranty)

When these inline duct blowers were conceived, reliability and efficiency were the main goal. Its more powerful motor combined with its aerodynamically designed shape make **Vortex Powerfan** the performance leader in its category. Made in Canada by **Atmosphere**, these high performance inline blowers feature superior steel construction with a hammertone powder coat finish. Speed controllable and balanced motors with permanently lubricated ball bearings ensure vibration-free operation. Never seen in the ventilation industry, the **Vortex Powerfan VTX Series** feature a 10 year warranty. The bottom line: **Vortex Powerfan** is all about performance, reliability, and quality all wrapped up into one package to ensure peace of mind for years.

- Brackets included for wall or ceiling mount
- Permanently lubricated sealed bearings
- External rotor motor with automatic reset thermal overload protection
- Suitable for airstream temperatures up to 140°F (60°C)
- 4" to 12" duct diameters
- Airflow capacity from 220 to 1124 CFM
- Aerodynamic design allowing more air flow
- 100% speed controllable easing air flow adjustment
- Prewired with 120V power cord
- AMCA air listed

VTX Series Performance Data ALL VTX PRODUCTS INCORPORATE MOTORS SUITABLE FOR 120 Volts AC 60Hz ELECTRICAL SUPPLY ONLY

FAN MODEL	Duct Dia.	RPM	Volts	Rated Watts	Max Amps	Static Pressure in Inches W.G.											Max Ps
						0"	0.125"	0.2"	0.25"	0.375"	0.5"	0.75"	1"	1.25"	1.5"	2"	
VTX400	4"	2970	120	70	0,75	220	208	200	195	183	170	144	119	95	70	18	2.175"
VTX500	5"	2940	120	70	0,77	255	237	225	217	197	179	149	122	93	65	---	1.986"
VTX600L	6"	2950	120	70	0,77	293	270	257	249	227	204	164	131	98	67	---	1.953"
VTX600	6"	3050	120	140	1,28	497	477	465	456	434	411	364	318	273	229	136	2.744"
VTX800L	8"	3000	120	196	1,62	651	621	602	588	555	513	416	349	294	245	162	2.856"
VTX800	8"	3060	120	260	2,29	739	703	681	667	628	591	531	468	408	357	268	3.042"
VTX1000	10"	3070	120	273	2,28	791	748	723	706	664	624	555	489	431	378	280	3.044"
VTX1200L	12"	2970	120	272	2,26	892	864	846	833	799	761	677	590	510	442	313	2.958"
VTX1200	12"	2820	120	393	3,26	1124	1090	1067	1051	1006	954	845	733	631	549	404	3.503"

Performance certified is for installation type D - Ducted inlet, Ducted outlet. Speed (RPM) shown is nominal. Performance is based on actual speed of test. Performance ratings include the effects of appurtenances (accessories) Inlet Duct, Inlet Bell, Outlet Duct

VBC Series (5 year limited warranty)

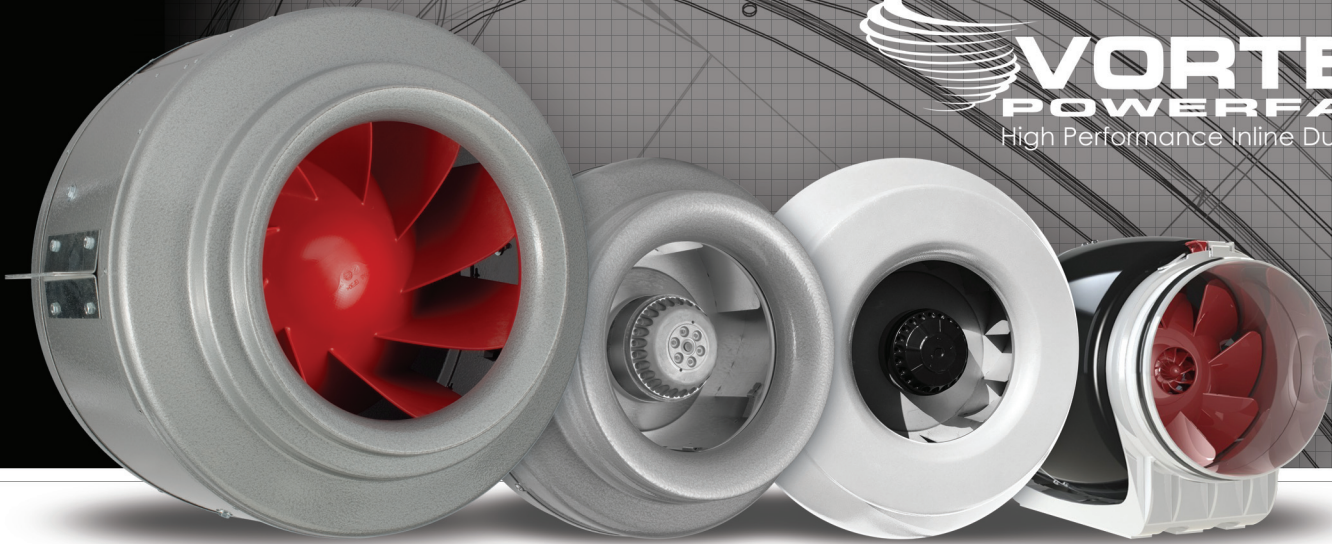
Specifically designed for warm and humid applications, the **Vortex Powerfan VBC Series** are available in sizes ranging from 4" to 12" and can develop up to 1010 CFM. Every model is built for a connection to a standard round duct.

- Brackets included for wall or ceiling mount
- Permanently lubricated sealed bearings
- External rotor motor with automatic reset thermal overload protection
- Suitable for airstream temperatures up to 140°F (60°C)
- Aerodynamic design allowing more air flow
- Airflow capacity from 173 to 1010 CFM
- Speed controllable

VBC Series Performance Data ALL VBC PRODUCTS INCORPORATE MOTORS SUITABLE FOR 120 Volts AC 60Hz ELECTRICAL SUPPLY ONLY

FAN MODEL	Duct Dia.	RPM	Volts	Rated Watts	Max Amps	Static Pressure in Inches W.G.										Max Ps
						0"	.125"	.25"	.375"	.5"	.75"	1"	1.25"	1.5"		
VBC400	4"	2500	120	87	0.78	173	156	147	136	128	107	89	71	47	1.8"	
VBC500	5"	2500	120	87	0.78	215	191	172	156	137	113	93	72	38	1.58"	
VBC600	6"	2500	120	135	1.2	403	361	342	320	303	257	205	172	135	2.16"	
VBC800	8"	2550	120	205	1.75	729	701	681	660	631	545	471	401	345	3.16"	
VBC1000	10"	2550	120	205	1.75	781	768	731	705	670	623	554	476	400	3.31"	
VBC1200	12"	2500	120	205	1.75	1010	958	930	902	889	836	788	742	697	3.47"	

Performances are based on installation type D - Ducted inlet, Ducted outlet. Speed (RPM) shown is nominal. Performance is based on actual speed of test.



V-Series

VTX Series

VBC Series

S-line

CONFORMS TO
UL 507 and
CSA C22.2
no.113



S-line (10 year warranty)

The people who design and build fans also need something to look up to. To aspire to. And for the past 20 years, the **Vortex Powerfan** has been that icon. A showcase of the very latest in design, technology and performance. Everything a fan can be. The **S-line**. Unlike any other.

- Powerful, compact and quiet mixed flow impeller
- Easy to install - mounting brackets included 100% speed controllable
- May be mounted in any position
- Suitable for airstream temperatures up to 140°F (60°C)
- Prewired with 120V power cord
- Energy efficient variable speed motor
- Fan and motor are precisely balanced for a quiet and vibration-free operation
- Airflow capacity from 340 to 1082 CFM
- AMCA air listed

S-line Performance Data

ALL S-LINE FANS INCORPORATE MOTORS SUITABLE FOR 120 Volts AC 60Hz ELECTRICAL SUPPLY ONLY

FAN MODEL	Duct Dia.	RPM	Volts	Rated Watts	Max Amps	Static Pressure in Inches W.G.										Max Ps
						0"	.125"	.2"	.25"	.375"	.5"	.75"	1.0"	1.25"	1.5"	
S-600	6"	2720	120	72	0,68	340	323	312	305	285	265	215	39	---	---	1.185
S-800	8"	3150	120	232	1,99	711	697	688	682	666	649	612	570	501	204	1.844
S-1000	10"	2970	120	232	2,12	1082	1051	1032	1019	984	946	866	781	687	197	1.766

Performance certified is for installation type D - Ducted inlet, Ducted outlet. Speed (RPM) shown is nominal. Performance is based on actual speed of test. Performance ratings include the effects of appurtenances (accessories) Inlet Duct, Inlet Bell, Outlet Duct

V-Series (3 year warranty)

Atmosphere's Vortex Powerfans V-Series combine high performance and quiet operation. These fans are equipped with a mixed-flow impeller allowing more air volume than any other comparable impeller design. Furthermore, the **V-Series** fans operate at lower RPM (1500 to 1700) making them even quieter. These fans are available in configurations from 12" to 16" ranging from 2050 to 4515 CFMs.

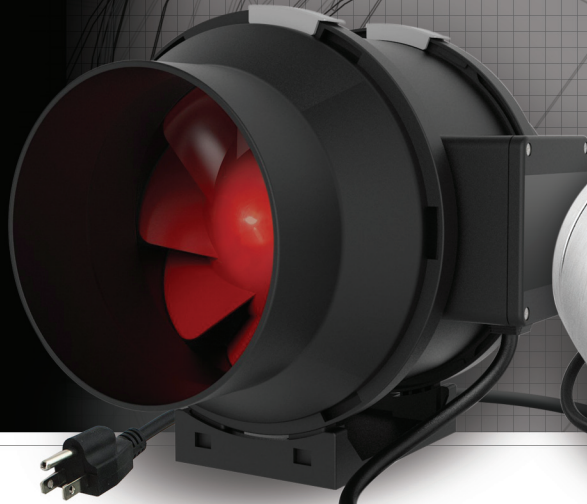
- Aerodynamic design allowing more air flow
- Heavy gage steel casing with a hammertone powder coat finish, making it more sound absorbing and rustproof
- High quality maintenance-free balanced motor, equipped with a mixed flow impeller, allowing an extremely quiet operation
- Power cord included
- 100% speed controllable, easing air flow adjustment, for better balancing of the ventilation system. (optional speed control)
- Extended collar and lip, allowing easy duct hook-up
- Airflow capacity from 2050 to 4515 CFM
- Permanently lubricated maintenance-free ball bearing motor

V-Series Performance Data

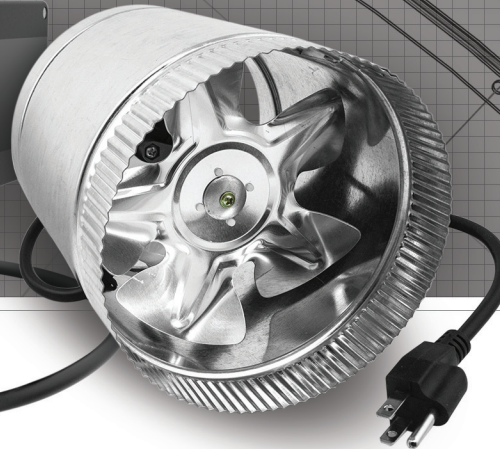
FAN MODEL	Duct Dia.	*RPM	Volts	Rated Watts	Max Amps	Static Pressure in Inches W.G.										Max Ps	Sones
						0"	.125"	.25"	.375"	.5"	.75"	1.0"	1.25"	1.5"			
V-12XL	12"	1700	120	540	4.8	2050	1951	1862	1774	1675	1445	1083	615	43	1.54	19.1	
V-14XL	14"	1500	120	860	7.5	2905	2728	2607	2492	2381	2117	1799	1362	837	1.97	20.4	
V-16XL	16"	1600	230	1550	6.6	4515	4374	4238	4097	3952	3645	3312	2950	2512	2.55	23.2	

*Speed (RPM) shown is nominal

Performance ratings are based on installation type D - Ducted inlet, Ducted outlet
Performance ratings do not include the effects of appurtenances (Accessories)



VMF Series



VAT Series

CONFORMS TO
UL 507 and
CSA C22.2
no.113



VMF Series (1 year limited warranty)

The **Vortex Powerfan VMF Series** is an in-line duct fan specifically designed to maximize the airflow performance with minimal noise levels in a small, compact housing. These fans incorporate a powerful mixed flow impeller and internal air vanes located at the discharge end of the fan housing. This impeller and guide vane combination provides a smooth laminar air flow which in turn minimizes turbulence and noise and generate an excellent air flow to static pressure performance ratio.

- Quiet operation
- Available in duct diameter from 4" to 8"
- Airflow capacity from 157 to 617 CFM
- Can be mounted in any position
- Precisely balanced for vibration-free operation and longer life expectancy
- Speed controllable

VMF Series Performance Data

ALL VMF PRODUCTS INCORPORATE MOTORS SUITABLE FOR 120 Volts AC 60Hz ELECTRICAL SUPPLY ONLY

FAN MODEL	Duct Dia.	RPM	Volts	Rated Watts	Max Amps	Static Pressure in Inches W.G.									Max Ps
						0"	.125"	.25"	.375"	.5"	.75"	1"	1.25"	1.5"	
VMF400	4"	2400	120	60	0.85	157	128	105	81	60	22	---	---	---	0.84"
VMF600	6"	2400	120	70	0.58	329	301	273	250	227	156	---	---	---	1.1"
VMF800	8"	2450	120	190	1.59	617	538	490	418	335	198	100	---	---	1.44"

Performances are based on installation type D - Ducted inlet, Ducted outlet. Speed (RPM) shown is nominal. Performance is based on actual speed of test.

VAT Series (1 year limited warranty)

The **VAT Series** axial in-line fans are ideal to boost airflow. These compact, powerful and quiet fans come completely wired with junction box, strain relief and power cord. Light weight and easy to install, they are fluted on both ends to ease connection to ducting.

- Available in duct diameters from 4" to 10"
- Airflow capacity from 65 to 1120 CFM
- Can be mounted in any position

VAT Series Performance Data

FAN MODEL	Duct Dia.	Volts	Rated Watts	CFM
VAT400	4"	120	14	65
VAT600	6"	120	40	280
VAT800	8"	120	40	420
VAT1000	10"	120	96	1120

ALL VAT PRODUCTS INCORPORATE MOTORS SUITABLE FOR 120 Volts AC 60Hz ELECTRICAL SUPPLY ONLY

2480 boul. des Entreprises Terrebonne, QC, Canada J6X 4J8

Tel.: 450 477-1100 Fax: 514 313-5700

Toll Free: 1 800 489-1301 Email: info@atmosphere.com