

The ULTRA Series

Optimal performance in the most challenging climates

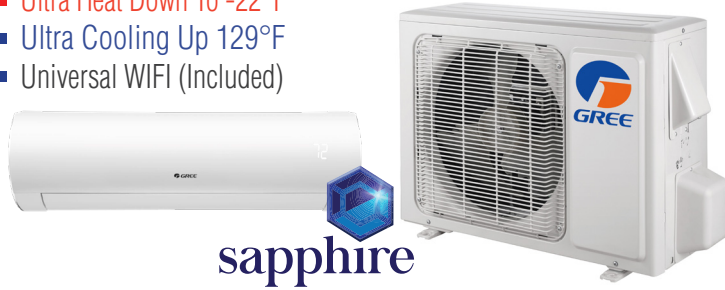


ULTRA Single Zone Systems

The Sapphire and Vireo+ ULTRA heat pump units provide ULTRA heating & cooling. Sapphire, powered by GREE's 2-Stage G10 inverter, and Vireo+ ULTRA, powered by the "unique to GREE" 2-Stage/3 Cylinder variable speed compressor, provide highly efficient heating down to -22°F and -31°F respectively. Our G10 inverter technology saves energy, reduces outdoor noise and keeps room temperature consistent by eliminating the harsh starts & stops of conventional systems. Each outdoor coil has corrosion-resistant acrylic resin coating to maintain energy efficiency.

SAPPHIRE SERIES

- Ultra Heat Down To -22°F
- Ultra Cooling Up 129°F
- Universal WIFI (Included)



sapphire

VIREO+ ULTRA SERIES

- Ultra Heat Down To -31°F
- Ultra Cooling Up 115°F
- Universal WIFI kits (Optional)



vireo+ ULTRA



MODEL		SAP09HP230V1A	SAP12HP230V1A	SAP18HP230V1A	SAP24HP230V1A	VIRU30HP230V1A	VIRU36HP230V1A
System Type		HEAT PUMP					
SYSTEM PERFORMANCE							
AHRI Rated Cooling Capacity	Btu/h	9,000	12,000	18,000	22,000	28,000	33,000
Cooling Capacity (Min-Max)	Btu/h	(1,535 - 12,966)	(2,900 - 15,354)	(4,094 - 21,837)	(6,800-30,700)	(5,500-30,700)	(8,800 - 40,900)
Heating Capacity (Min-Max)	Btu/h	(2,388 - 13,648)	(3071 - 18,766)	(4,094,-,24,566)	(6,800-32,000)	(4,400 - 35,200)	(16,700 - 49,400)
SEER / EER		38 / 16.5	30.5 / 15.3	24.5/13.5	21.5/13.0	23 / 11.2	23 / 10.2
HSPF / COP		15 / 4.5	14 / 3.8	12 / 3.5	12 / 3.5	10.5 / 3.1	10.5 / 3.2
AHRI Heating Capacity (47 °F / 17 °F)	Btu/h	(9,000 / 5,600)	(12,200 / 8,100)	(18,000 / 14,200)	(24,000 / 15,500)	(28,800 / 28,800)	(34,600 / 34,600)
Energy Star®		Yes	Yes	Yes	Yes	No	No
INDOOR UNIT							
		SAP09HP230V1AH	SAP12HP230V1AH	SAP18HP230V1AH	SAP24HP230V1AH	VIRU30HP230V1AH	VIRU36HP230V1AH
Airflow (Min-Max)	CFM	(206 - 424)	(235 - 500)	(353 - 736)	(383 - 824)	(441 - 824)	(441 - 824)
Sound Pressure Level (Min-Max)	dB(A)	(19 - 45)	(22 - 49)	(34 - 51)	(27 - 54)	(36 - 55)	(36 - 55)
Dehumidification	pt/hr	1.7	3	3.8	4.2	6.34	7.4
Unit Dimension (LxWxH)	in	39.9 x 8.7 x 12.1	39.9 x 8.7 x 12.1	44.2 x 9.7 x 13	44.2 x 9.7 x 13	53.2 x 10 x 12.9	53.2 x 10 x 12.9
Weight (Net /Gross)	lbs	29.8 / 36.4	29.8 / 36.4	36.4 / 44.1	35.3 / 42	36.4 / 43.0	36.4 / 43.0
OUTDOOR UNIT							
		SAP09HP230V1AO	SAP12HP230V1AO	SAP18HP230V1AO	SAP24HP230V1AO	VIRU30HP230V1AO	VIRU36HP230V1AO
Compressor Type		G10 INVERTER DRIVEN 2-STAGE ROTARY				G10 INVERTER DRIVEN 2-STAGE / 3 - CYLINDER	
Sound Pressure Level	dB(A)	53	53	59	59	61	63
Cooling Temperature Range	°F	0 - 129	0 - 129	0 - 129	0 - 129	0 - 115	0 - 115
Heating Temperature Range	°F	-22 - 75	-22 - 75	-22 - 75	-22 - 75	-31 - 75	-31 - 75
Unit Dimension (LxWxH)	in	35.4 x 14.9 x 23.5	35.4 x 14.9 x 23.5	38.6 x 16.8 x 31.1	38.6 x 16.8 x 31.1	43.6 x 17.3 x 43.5	43.6 x 17.3 x 43.5
Weight (Net /Gross)	lbs	99 / 106	99 / 106	141 / 152	148 / 159	229.3 / 240.3	253.6 / 264.6
Refrigerant Charge - R410A	oz	50.4	49.4	70.6	81.1	123.5	123.5
Coil Type		COPPER / ALUMINIUM WITH ACRYLIC RESIN / ANTI-CORROSION PROTECTION					
INSTALLATION							
Line Set Size (Liquid-Gas)	in	1/4 - 1/2	1/4 - 1/2	1/4 - 5/8	1/4 - 5/8	1/4 - 5/8	1/4 - 5/8
Pre-Charge Length	ft	25	25	25	25	25	25
Max. Line Run	ft	49	98	131	164	165	165
Max. Elevation	ft	33	49	66	98	100	100
ELECTRICAL							
Voltage / Phase / Hertz		208-230 / 1 / 60	208-230 / 1 / 60	208-230 / 1 / 60	208-230 / 1 / 60	208-230 / 1 / 60	208-230 / 1 / 60
Starting Current	Amp	5	5	5	5	5	5
MCA	Amps	9	9	22	22	30	32
MOCP	Amps	15	15	30	35	50	50
Interconnecting Wire (AWG)	AWG	14 / 4					
Power Wiring	AWG	16 / 2	16 / 2	12 / 2	12 / 2	8 / 2	8 / 2
Limited Warranty (Residential Only)		5 Years on Parts					



ULTRA Multi Zone Systems

MULTIU 18 – 42 Series

- High efficiency up to 23 SEER
- Sound levels down to 58 dB(A)
- Up to 5 Indoor Units
- Cooling Range: 0°F – 115°F
- Heating Range: -31°F – 75°F

MULTIU 48 Series

- High efficiency up to 18 SEER
- Sound levels down to 56 dB(A)
- Up to 7 indoor units
- Cooling Range: 54°F – 129°F
- Heating Range: -31°F – 91°F



Multi-point Diagnostics - Intelligent Defrost - Heavy Gauge Steel Cabinet - Include Line-Set Adaptors

MODEL		MULTIU18HP230V1DO	MULTIU24HP230V1DO	MULTIU36HP230V1DO	MULTIU42HP230V1DO	MULTIU48HP230V1BO
Number of Zones		2	2-3	2-4	2-5	2-7
SYSTEM PERFORMANCE NON-DUCTED INDOOR UNITS	Nominal Capacity	18,000	24,000	36,000	42,000	48,000
AHRI Rated Cooling Capacity	Btu/h	18,000	22,000	36,000	42,000	48,000
Cooling Capacity (Min-Max)	Btu/h	(6,998 - 21,000)	(7,500 - 30,000)	(8,871 - 40,000)	(8,871 - 42,991)	(3,412 - 54,592)
SEER / EER		23 / 12.5	23 / 12.5	23 / 9	23 / 9	18 / 8.85
HSPF / COP		10.5 / 3.6	10.5 / 3.7	10 / 3.2	10 / 3.4	10 / 3.2
AHRI Rated Heating Capacity (47°F / 17°F)	Btu/h	(21,000 / 17,000)	(26,000 / 17,900)	(36,000 / 29,000)	(42,000 / 30,000)	54,000 / 38,000
SYSTEM PERFORMANCE DUCTED INDOOR UNITS						
AHRI Rated Cooling Capacity	Btu/h	18,000	22,000	36,000	42,000	48,000
SEER / EER		14 / 8.5	14 / 8.5	14.0 / 7.5	14 / 7.5	16 / 8.55
AHRI Heating Capacity (47°F / 17°F)	Btu/h	(21,000 - 18,100)	(26,000 - 18,900)	(36,000 - 29,200)	(42,000 - 30,800)	(54,000 - 37,000)
HSPF		9	9	9	9	10
OUTDOOR UNIT						
Compressor Type		GREE G-10 - 2 STAGE / 3 CYLINDER INVERTER				
Sound Pressure Level	dB(A)	58	60	62	62	56
Cooling Temperature Range	°F	0 - 115°F	0 - 115°F	0 - 115°F	0 - 115°F	50 - 129
Heating Temperature Range	°F	-31 - 75°F	-31 - 75°F	-31 - 75°F	-31 - 75°F	-31 - 81
Unit Dimension (LxWxH)	in	39.5 x 16.8 x 31.1	39.5 x 16.8 x 31.1	42.8 x 17.3 x 43.4	42.8 x 17.3 x 43.4	35.4 x 17.3 x 53
Weight (Net/Gross)	lbs	172 / 183	174 / 185	280 / 298	282 / 300	307 / 331
Refrigerant Charge - R410A	oz	77.6	95.3	158.7	176.4	229.3
Coil Type		Acrylic - Resin / Copper - Aluminum				
INSTALLATION						
Line Set Size (Liquid-Gas)	Port A - in	1/4 - 3/8	1/4 - 3/8	1/4 - 3/8	1/4 - 5/8	3/8 x 5/8
	Port B - in	1/4 - 3/8	1/4 - 3/8	1/4 - 3/8	1/4 - 3/8	MULTIU48 Systems require the installation of (2) Port or (3) Port Branch Boxes to connect desired number of Indoor Units
	Port C - in	-	1/4 - 3/8	1/4 - 3/8	1/4 - 3/8	
	Port D - in	-	-	1/4 - 3/8	1/4 - 3/8	
	Port E - in	-	-	1/4 - 3/8	1/4 - 3/8	
Pre-Charge Length	ft	66	98	131	131	
Total Piping Length	ft	164	230	246	263	443
Piping to furthest Indoor Unit	ft	82	82	82	82	230
Elevation (OD above IDU)	ft	33	33	49	49	98
ELECTRICAL						
Voltage / Phase / Hertz		208-230 / 1 / 60	208-230 / 1 / 60	208-230 / 1 / 60	208-230 / 1 / 60	208-230 / 1 / 60
Starting Current	Amp	5	5	5	5	-
MCA	Amp	20	23	36	38	39
MOCP	Amp	25	40	60	60	60
Interconnecting Wire	AWG			14 / 4		
Power Wiring	AWG	10 / 2	10 / 2	8 / 2	8 / 2	8 / 2
Limited Warranty (Residential Only)		5 Year Parts and Compressor				

MULTIU48HP230V1BO Requires Branch Boxes

BRANCH (BU) BOXES FOR MULTIU48		RFX12A (FXA2A-D)	RFX13A (FXA3A-D)
System Type		HEAT PUMP - MINI-BRANCH (BU) BOXES FOR MULTIU48	
Maximum No. Per System		3	2
No. Connectable Indoor Units		Up to 2	Up to 3
Inlet Port Size to OD Unit (Liquid-Gas)	in	3/8 - 5/8	1/4 - 3/8
Outlet/Port Size to ID Unit (Liquid-Gas)	in	1/4 - 3/8	1/4 - 3/8
Sound Pressure Level (Min - Max)	dB(A)	28	28
Unit Dimensions (LxWxH)	in	14.2 x 12.3 x 7.2	14.2 x 12.3 x 7.2
Weight (Net / Gross)	lbs	12.1 / 16.5	13.2 / 17.6
Line Set Size (Liquid-Gas)	in	1/4 - 3/8	1/4 - 3/8
Dedicated Power Supply (V / Hz / PH)		208-230 / 1 / 60	208-230 / 1 / 60
Limited Warranty (Residential Only)		5 Years on Parts	



Ceiling Cassette

GREE's Ceiling Cassette inconspicuously provides quiet performance through innovative design. The Ceiling Cassette is suitable for any room and can be easily installed in suspended ceilings with only a discreet decorative discharge grille visible in the space.

Features and Benefits:

- 4-Way Discharge Air
- Multi Fan Speeds
- Swing Louver
- Power Failure Recovery
- Internal Condensate Drain Pump
- Sentry Float Switch
- Decorative Discharge Air Grille Required, sold separately



- Fresh Air Intake (24K model only)
- IR Remote and XK19 Wired Controller (Included)

CEILING CASSETTE		CAS12HP230V1AC	CAS18HP230V1AC	CAS24HP230V1AC
System Type		HEAT PUMP - CEILING CASSETTE		
Nominal Capacity*		12,000	18,000	24,000
Airflow (Min / Max)	CFM	265 / 353	265 / 353	500 / 694
Sound Pressure Level (Min / Max)	dB(A)	42 / 46	42 / 46	35 / 39
Dehumidification	pt/hr	3	3.8	5.3
Unit Dimensions (L x W x H)	in	22.4 x 22.4 x 9.1	22.4 x 22.4 x 9.1	37.8 x 37.8 x 9.5
Weight (Net / Gross)	lbs	39.6 / 50.6	39.6 / 50.6	61.6 / 77.0
Line Set Size (Liquid-Gas)	in	1/4 - 3/8	1/4 - 1/2	3/8 - 5/8
CASSETTE DISCHARGE GRILLE		CASGRILLE1SM	CASGRILLE1SM	CASGRILLE1LG
Grille Dimension (L x W x H)	in	25.6 x 25.6 x 2.0	25.6 x 25.6 x 2.0	37.4 x 37.4 x 2.4
Weight (Net / Gross)	lbs	5.5 / 8.0	5.5 / 8.0	7.0 / 10.0

Line sets are sized to Indoor Unit Port Sizes

* Min / Max capacities will be determined by the Outdoor unit's capacities if diversity factors are not applicable. Capacities for each zone will be 10% higher Min capacity and 10% lower Max capacity than the 1 to 1 system capacities listed in the brochure.

Universal Floor/ Ceiling

Our Universal Floor/Ceiling indoor units are designed to be suspended from a ceiling or mounted low on a wall. The slender and lightweight design is perfect for restaurants or hallways where wall space is limited.

Features and Benefits:

- 4-Way Discharge Air
- Multi Fan Speeds
- Comfortable Sleep Mode
- Swing Louver
- Cleanable Air Filter
- Remote Control Lockout



- Power Failure Recovery
- IR Remote and XK19 Wired Controller (Included)

UNIVERSAL FLOOR / CEILING UNIT		FLR09HP230V1AF	FLR12HP230V1AF	FLR18HP230V1AF	FLR24HP230V1AF
System Type		HEAT PUMP - UNIVERSAL FLOOR / CEILING UNIT			
Nominal Capacity*		9,000	12,000	18,000	24,000
Airflow (Min - Max)	CFM	265 - 383	265 - 383	294 - 559	412 - 736
Sound Pressure Level (Min - Max)	dB(A)	36 - 40	36 - 40	40 - 45	44 - 48
Dehumidification	pt/hr	1.7	3	3.8	5.3
Unit Dimensions (L x W x H)	in	48.0 x 8.9 x 27.6	48.0 x 8.9 x 27.6	48.0 x 8.9 x 27.6	48.0 x 27.6 x 8.9
Weight (Net / Gross)	lbs	88.2 / 110.2	88.2 / 110.2	88.2 / 110.2	99.2 / 119.1
Line Set Size (Liquid - Gas)	in	1/4 - 3/8	1/4 - 3/8	1/4 - 1/2	3/8 - 5/8

Line sets are sized to Indoor Unit Port Sizes

* Min / Max capacities will be determined by the Outdoor unit's capacities if diversity factors are not applicable. Capacities for each zone will be 10% higher Min capacity and 10% lower Max capacity than the 1 to 1 system capacities listed in the brochure.

Mini Floor Console

GREE's Mini Console indoor units are aesthetically pleasing and the perfect size for most rooms. They can be mounted as low as six inches above the floor and have front panel access to the filter for ease of cleaning.

Features and Benefits:

- 4-Way Discharge Air
- Multi Fan Speeds
- Comfortable Sleep Mode
- Swing Louver
- Whisper quiet down to 25 dB(A)
- Cleanable Air Filter
- XFAN Mode for Anti-Mildew Protection
- IR Remote Control (Included)



MINI-FLOOR CONSOLE		FLR09HP230V1AF	FLR12HP230V1AF	FLR18HP230V1AF
System Type		HEAT PUMP - MINI-FLOOR CONSOLE		
Nominal Capacity*		9,000	12,000	18,000
Airflow	CFM	188 - 382	206 - 441	241 - 494
Sound Pressure Level (Min - Max)	dB(A)	36 - 40	36 - 40	40 - 45
Dehumidification	pt/hr	1.7	3	3.8
Unit Dimensions (L x W x H)	in	27.6 x 23.6 x 8.5	27.6 x 23.6 x 8.5	27.6 x 23.6 x 8.5
Weight (Net / Gross)	lbs	33.0 / 39.6	33.0 / 39.6	33.0 / 39.6
Line Set Size (Liquid - Gas)	in	1/4 - 3/8	1/4 - 3/8	1/4 - 1/2

* Min / Max capacities will be determined by the Outdoor unit's capacities if diversity factors are not applicable. Capacities for each zone will be 10% higher Min capacity and 10% lower Max capacity than the 1 to 1 system capacities listed in the brochure.

Line sets are sized to Indoor Unit Port Sizes

Premier Series Wall Mount

The Sapphire is GREE's smart, ductless high wall unit. Its slim, compact design hangs inconspicuously on the wall and mixes well with most interior designs. Built-In WIFI technology allows direct local control from Smartphones with the GREE+ Smart App.

Features and Benefits:

- Universal WIFI
- Smart Phone Interface
- Quiet down to 19 dB(A)
- 7 Fan Speeds - Including Turbo
- 180° Multi-Directional Airflow
- 4-Way Adjustable Swing Louvers
- I-FEEL Temperature Control
- IR Remote Control (Included)
- XE71 Wired Controller (Optional)




sapphire



SAPPHIRE WALL MOUNT		SAP09HP230V1A	SAP12HP230V1A	SAP18HP230V1A	SAP24HP230V1A
System Type		HEAT PUMP-SAPPHIRE WALL MOUNT			
Nominal Capacity*		9,000	12,000	18,000	24,000
Airflow (Min - Max)	CFM	206 - 424	235 - 500	353 - 736	383 - 824
Sound Pressure Level (Min - Max)	dB(A)	19 - 45	22 - 49	34 - 51	34 - 54
Dehumidification	pt/hr	1.7	3	3.8	4.2
Unit Dimensions (L x W x H)	in	39.9 x 8.7 x 12.1	39.9 x 8.7 x 12.1	44.2 x 9.7 x 13	44.2 x 9.7 x 13
Weight (Net / Gross)	lbs	29.8 / 36.4	29.8 / 37.5	36.4 / 44.1	35.3 / 42
Line Set Size (Liquid-Gas)	in	1/4 - 1/2	1/4 - 1/2	1/4 - 5/8	1/4 - 5/8

NOTE: On 09 Size Units Only: Fan must be set on "Auto" or "Hi" to operate properly.
* Min / Max capacities will be determined by the Outdoor unit's capacities if diversity factors are not applicable. Capacities for each zone will be 10% higher Min capacity and 10% lower Max capacity than the 1 to 1 system capacities in the brochure.

Line sets are sized to Indoor Unit Port Sizes

Connoisseur Wall Mount

GREE's Vireo+ ductless wall mount has a compact design that blends well with any décor. It is the perfect option for your home or office needs.



Features and Benefits:

- 4 Fan Speeds
- Vertical Adjustable Swing Louvers
- Turbo Mode
- Universal WIFI (Optional)
- Power Failure Recovery
- XFAN Mode for Anti-Mildew Protection
- IR Remote Control (Included)
- XE71 Wired Controller (Optional)
- Universal WIFI Kits Part No. WSBE04 (Optional)



VIREO+ WALL MOUNT		VIR09HP230V1BH	VIR12HP230V1BH	VIR18HP230V1BH	VIR24HP230V1BH
System Type		HEAT PUMP -VIREO+ WALL MOUNT			
Nominal Capacity*		9,000	12,000	18,000	24,000
Airflow (Min - Max)	CFM	171 - 377	171 - 400	335 - 559	530 - 706
Sound Pressure Level (Min - Max)	dB(A)	29 - 43	29 - 45	39 - 47	36 - 48
Dehumidification	pt/hr	1.7	3	3.8	4.2
Unit Dimensions (L x W x H)	in	33.3 x 8.2 x 11.4	33.3 x 8.2 x 11.4	38.2 x 8.8 x 11.8	42.4 x 9.7 x 12.8
Weight (Net / Gross)	lbs	22.1 / 26.5	22.1 / 26.5	27.6 / 34.2	34.2 / 41.9
Line Set Size (Liquid - Gas)	in	1/4 - 3/8	1/4 - 1/2	1/4 - 5/8	1/4 - 5/8

Line sets are sized to Indoor Unit Port Sizes

Note: On 09 Size Units Only: Fan must be set on "Auto" or "Hi" to operate properly.
 * Min / Max capacities will be determined by the Outdoor unit's capacities if diversity factors are not applicable.
 Capacities for each zone will be 10% higher Min capacity and 10% lower Max capacity than the 1 to 1 system capacities listed in the brochure.

Comfort Wall Mount

GREE's Livo+ ductless high wall has a compact design for quiet comfort and an attractive appearance. You can count on consistent comfort with the Livo+.



Features and Benefits:

- Multiple Fan Speeds
- Vertical Adjustable Swing Louvers
- Backlight Display
- Comfortable Sleep Mode
- Selectable Dry Mode
- Programmable Timer
- Control Lock
- IR Remote Control (Included)
- XE71 Wired Controller (Optional)
- Universal WIFI Kits Part No. WSBE04 (Optional)



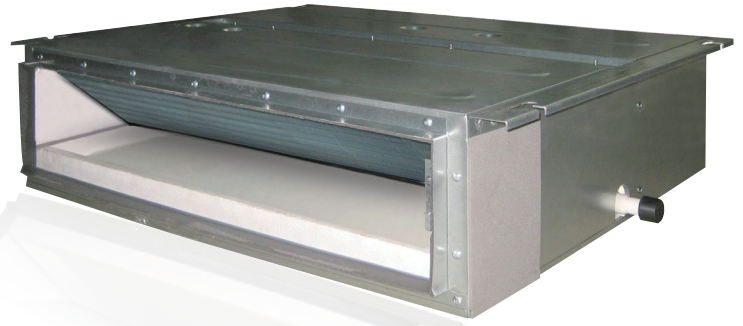
LIVO+ WALL MOUNT		LIV09HP230V1BH	LIV12HP230V1BH	LIV18HP230V1BH	LIV24HP230V1BH
System Type		HEAT PUMP - LIVO+ WALL MOUNT			
Nominal Capacity*		9,000	12,000	18,000	24,000
Airflow (Min - Max)	CFM	171 - 318	194 - 400	282 - 471	530 - 706
Sound Pressure Level (Min - Max)	dB(A)	28 - 43	29 - 45	35 - 46	36 - 48
Dehumidification	pt/hr	1.7	3	3.8	5.3
Unit Dimensions (L x W x H)	in	31.1 x 7.9 x 10.8	33.3 x 8.2 x 11.4	38.2 x 8.8 x 11.8	42.4 x 9.7 x 12.8
Weight (Net / Gross)	lbs	19.8 / 24.3	23.2 / 28.7	29.8 / 36.4	37.5 / 45.2
Line Set Size (Liquid - Gas)	in	1/4 - 3/8	1/4 - 3/8	1/4 - 1/2	1/4 - 5/8

Line sets are sized to Indoor Unit Port Sizes

Note: On 09 Size Units Only: Fan must be set on "Auto" or "Hi" to operate properly.
 * Min / Max capacities will be determined by the Outdoor unit's capacities if diversity factors are not applicable.
 Capacities for each zone will be 10% higher Min capacity and 10% lower Max capacity than the 1 to 1 system capacities listed in the brochure.

Horizontal Slim Duct

The GREE concealed duct indoor units offer the ultimate in flexibility and discretion. These slim indoor units are designed to be concealed above suspended ceilings or within open closet spaces to deliver conditioned air via ducting and suitable ceiling or wall grilles.



Features and Benefits:

- Medium Static Pressure Capability
- Slim Line Construction 7-7/8" high
- Alternate Return Air From Bottom or Rear
- Internal Condensate Pump
- Sentry Float Switch
- IR Remote and XK19 Wired Controllers (Included)



SLIM DUCT		DUCT09HP230V1AD	DUCT12HP230V1AD	DUCT18HP230V1AD	DUCT24HP230V1AD
System Type		HEAT PUMP - SLIM DUCT			
Nominal Capacity*		9,000	12,000	18,000	24,000
Airflow (Min - Max)	CFM	147 - 265	177 - 324	294 - 412	324 - 589
Sound Pressure Level (Min / Max)	dB(A)	31 / 37	32 / 39	33 / 41	34 / 42
Dehumidification	pt/hr	1.7	3	3.8	5.3
Unit Dimensions (L x W x H)	in	27.6 x 24.2 x 7.9	27.6 x 24.2 x 7.9	35.4 x 24.2 x 7.9	43.3 x 24.2 x 7.9
Weight (Net / Gross)	lbs	48.5 / 69.4	50.7 / 63.9	59.5 / 79.4	68.3 / 90.4
Line Set Size (Liquid-Gas)	in	1/4 - 3/8	1/4 - 3/8	1/4 - 1/2	3/8 - 5/8

Note: Horizontal application only
 * Min / Max capacities will be determined by the Outdoor unit's capacities if diversity factors are not applicable.
 Capacities for each zone will be 10% higher Min capacity and 10% lower Max capacity than the 1 to 1 system capacities listed in the brochure.

Line sets are sized to Indoor Unit Port Sizes

Horizontal Slim Duct High Static

Compact and powerful, the GREE High Static concealed duct indoor units are designed for external static pressures of up to .8 InWc. These versatile units can be concealed above suspended ceilings or within open closet spaces to deliver conditioned air via ducting and suitable ceiling or wall grilles.



Features and Benefits:

- External Condensate
- Pump Sentry Float Switch
- IR Remote and XK19 Wired Controllers (Included)
- Medium Static Pressure Capability
- Slim Line Construction 13.7" high
- Alternate Return Air from Bottom or Rear



HIGH STATIC SLIM DUCT		DUCT09HP230V1BD	DUCT12HP230V1BD	DUCT18HP230V1BD	DUCT24HP230V1BD
System Type		HEAT PUMP -HIGH STATIC SLIM DUCT			
Nominal Capacity*		9,000	12,000	18,000	24,000
External Static Pressure (Range)	Inwc	0 - .6	0 - .6	0 - .8	0 - .8
Airflow (Min - Max)	CFM	188 - 324	211 - 353	288 - 589	406 - 736
Sound Pressure Level (Min / Max)	dB(A)	25 / 36	26 / 38	26 / 39	28 / 42
Dehumidification	pt/hr	1.7	3	3.8	5.3
Unit Dimensions (L x W x H)	in	32.7 x 29.7 x 13.6	32.7 x 29.7 x 13.6	44.5 x 29.7 x 13.6	44.5 x 29.7 x 13.6
Weight (Net / Gross)	lbs	70.6 / 84	70.6 / 84	92.6 / 107	92.6 / 107
Line Set Size (Liquid-Gas)	in	1/4 - 3/8	1/4 - 1/2	3/8 - 5/8	3/8 - 5/8

Note: Horizontal application only
 * Min / Max capacities will be determined by the Outdoor unit's capacities if diversity factors are not applicable.
 Capacities for each zone will be 10% higher Min capacity and 10% lower Max capacity than the 1 to 1 system capacities listed in the brochure.

Line sets are sized to Indoor Unit Port Sizes

Matching Combinations & Capacities:

MULTIU18HP230V1DO 2 Combinations

TWO UNITS
9 + 9
9 + 12

MULTIU24HP230V1DO 11 Combinations

TWO UNITS		THREE UNITS	
9 + 9	12 + 12	9 + 9 + 9	9 + 12 + 12
9 + 12	12 + 18	9 + 9 + 12	12 + 12 + 12
9 + 18	18 + 18	9 + 9 + 18	

MULTIU36HP230V1DO 31 Combinations

TWO UNITS		THREE UNITS		FOUR UNITS	FIVE UNITS
9 + 9	12 + 18	9 + 9 + 9	9 + 12 + 24	9 + 9 + 9 + 9	9 + 9 + 9 + 9 + 9
9 + 12	12 + 24	9 + 9 + 12	9 + 18 + 18	9 + 9 + 9 + 12	9 + 9 + 9 + 9 + 12
9 + 18	18 + 18	9 + 9 + 18	12 + 12 + 12	9 + 9 + 9 + 18	
9 + 24	18 + 24	9 + 9 + 24	12 + 12 + 18	9 + 9 + 12 + 12	
12 + 12	24 + 24	9 + 12 + 12	12 + 12 + 24	9 + 9 + 12 + 18	
		9 + 12 + 18	12 + 18 + 18	9 + 12 + 12 + 12	
				12 + 12 + 12 + 12	

MULTIU42HP230V1DO 32 Combinations

TWO UNITS		THREE UNITS		FOUR UNITS	FIVE UNITS
9 + 9	12 + 18	9 + 9 + 9	9 + 12 + 24	9 + 9 + 9 + 9	9 + 9 + 9 + 9 + 9
9 + 12	12 + 24	9 + 9 + 12	9 + 18 + 18	9 + 9 + 9 + 12	9 + 9 + 9 + 9 + 12
9 + 18	18 + 18	9 + 9 + 18	12 + 12 + 12	9 + 9 + 9 + 18	
9 + 24	18 + 24	9 + 9 + 24	12 + 12 + 18	9 + 9 + 12 + 12	
12 + 12	24 + 24	9 + 12 + 12	12 + 12 + 24	9 + 9 + 12 + 18	
		9 + 12 + 18	12 + 18 + 18	9 + 12 + 12 + 12	
				9 + 12 + 12 + 18	
				12 + 12 + 12 + 12	

MULTIU48HP230V1BO 75 Combinations

	TWO UNITS	THREE UNITS	FOUR UNITS	FIVE UNITS	SIX UNITS	SEVEN UNITS
MULTIU48HP2301BO NOTE: These systems are not compatible with LIVO & LIVO+	9 + 18	9 + 9 + 9	9 + 9 + 9 + 9	9 + 9 + 9 + 9 + 9	9 + 9 + 9 + 9 + 9 + 9	9 + 9 + 9 + 9 + 9 + 9 + 9
	9 + 24	9 + 9 + 12	9 + 9 + 9 + 12	9 + 9 + 9 + 9 + 12	9 + 9 + 9 + 9 + 9 + 12	9 + 9 + 9 + 9 + 9 + 9 + 12
	12 + 12	9 + 9 + 18	9 + 9 + 9 + 18	9 + 9 + 9 + 9 + 18	9 + 9 + 9 + 9 + 9 + 18	9 + 9 + 9 + 9 + 9 + 9 + 18
	12 + 18	9 + 9 + 24	9 + 9 + 9 + 24	9 + 9 + 9 + 9 + 24	9 + 9 + 9 + 9 + 9 + 24	9 + 9 + 9 + 9 + 9 + 9 + 24
	12 + 24	9 + 12 + 12	9 + 9 + 12 + 18	9 + 9 + 9 + 12 + 12	9 + 9 + 9 + 9 + 12 + 12	9 + 9 + 9 + 9 + 12 + 12 + 12
	18 + 18	9 + 12 + 18	9 + 9 + 12 + 24	9 + 9 + 9 + 12 + 18	9 + 9 + 9 + 9 + 12 + 18	
	18 + 24	9 + 12 + 24	9 + 9 + 18 + 18	9 + 9 + 9 + 12 + 24	9 + 9 + 9 + 9 + 12 + 24	
	24 + 24	9 + 18 + 24	9 + 9 + 18 + 24	9 + 9 + 12 + 12 + 12	9 + 9 + 9 + 12 + 12 + 12	
		9 + 18 + 18	9 + 12 + 12 + 18	9 + 9 + 12 + 12 + 18	9 + 9 + 9 + 12 + 12 + 18	
		9 + 24 + 24	9 + 12 + 12 + 24	9 + 9 + 12 + 12 + 24	9 + 9 + 12 + 12 + 12 + 12	
		12 + 12 + 18	9 + 12 + 12 + 12	9 + 9 + 12 + 18 + 18		
		12 + 12 + 24	9 + 12 + 18 + 18	9 + 12 + 12 + 12 + 12		
		12 + 18 + 18	9 + 12 + 18 + 24	9 + 12 + 12 + 12 + 18		
		12 + 18 + 24	9 + 12 + 24 + 24	9 + 12 + 12 + 12 + 24		
		12 + 24 + 24	9 + 18 + 18 + 18	9 + 12 + 12 + 18 + 18		
		18 + 18 + 18	9 + 18 + 18 + 24	12 + 12 + 12 + 12 + 12		
		18 + 18 + 24	12 + 12 + 12 + 12	12 + 12 + 12 + 12 + 18		
		12 + 12 + 12	12 + 12 + 12 + 18	12 + 12 + 12 + 18 + 18		
		24 + 24 + 24	12 + 12 + 12 + 24	12 + 12 + 12 + 12 + 24		
			12 + 12 + 18 + 18			
		12 + 12 + 18 + 24				
		12 + 12 + 24 + 24				
		12 + 18 + 18 + 18				
		12 + 18 + 18 + 24				

Note: It is critical to size the outdoor unit for the entire building load and each indoor unit for its individual zone load.
Min / Max capacity of any approved matched system will be limited to the outdoor unit capabilities.